

30 km/h speed limit for urban roads in Spain. How?”



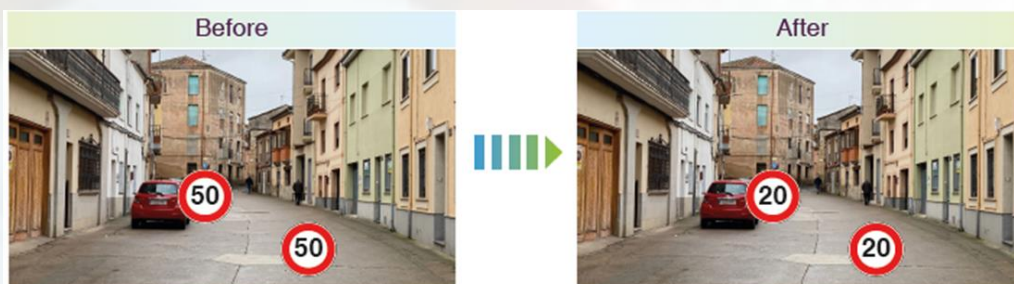
MINISTERIO
DEL INTERIOR



Dirección General
de Tráfico

What have we done?

- The general speed limit on urban roads is:
 - a) 20 km/h on roads with a single platform for traffic and footway.
 - b) 30 km/h on roads with a single lane each way.
 - c) 50 km/h on roads with two or more lanes each way.



Simple and practical rule for users

Why have we done it?

URBAN ROADS 30 %



519

VULNERABLE USERS

82 %



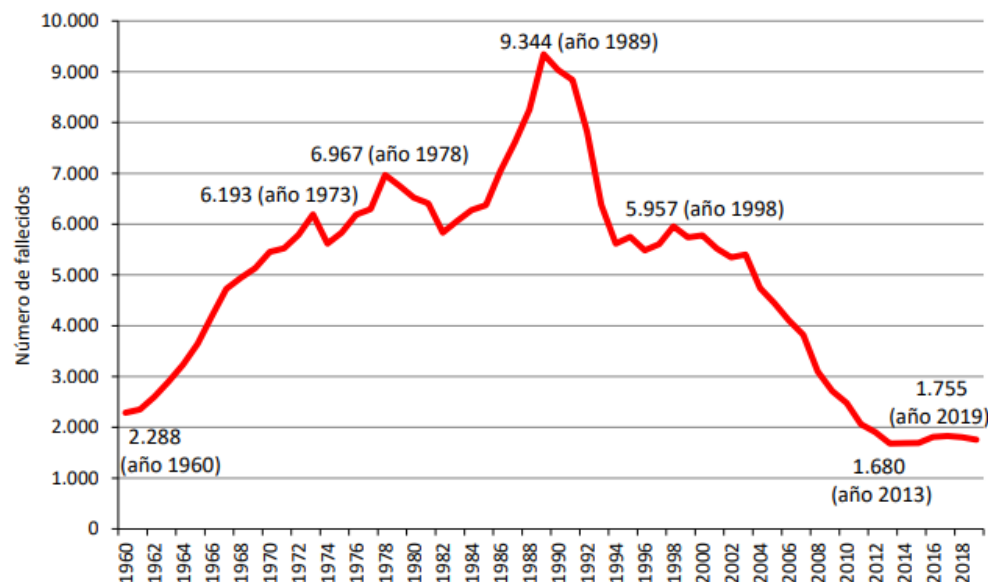
148



247



32



Why have we done it?

&....

- Promotion of **active mobility**: walking, cycling.
- **New means of mobility**: e-scooters, sharing...
- **Freight distribution** and e-commerce.
- COVID-19.
- **Limited space** in cities:
 - “Rule 1”: Sidewalks are for pedestrians.
 - “Rule 2”: Dedicated lanes (if necessary) : bus/taxis, bicycles (+ e-scooters).
 - Then... everyone shares the space at low speeds.

50 km/h on major access
and traffic distribution
roads
30 km/h on city streets

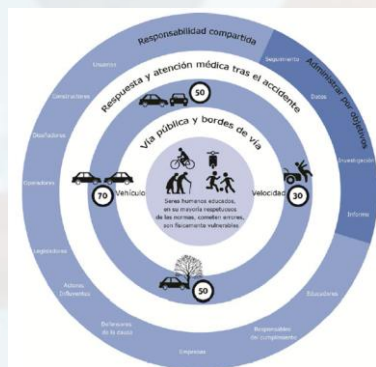
How have we done it?

- This can only be done with the support of, and demand from, local authorities.
- Over the last years, growing support from municipalities and civil society.
- Endorsement from the National Federation of Municipalities.



When communicating

- Appeal to international strategies and recommendations.
- Find international and national stories of success.
- Give voice to:
 - International organizations.
 - Civil society: associations of victims, pedestrians, cyclists, motorists.
 - Experts from the academy.



Streets for Life

#Love30

Some key messages

- Our priorities are the pedestrians (particularly the elderly and disabled), the cyclists and the public transport. Let's make sure walking and biking are safe.
- Change of philosophy: from traffic plans, which managed the use of cars, to **mobility plans**, which put people's needs at the center.
- This is a long-term project.
 - We look for a correspondence between the function of streets, their design and their speed limit (safe system principles).
- 80/20 city model.
 - 20% of the streets carry 80% of the traffic, at higher speeds.
 - 80% of the streets carry 20% of the traffic, at low speeds and sharing the space.
- We should not put too much emphasis on enforcement.

Communication



Thank you for your attention

